

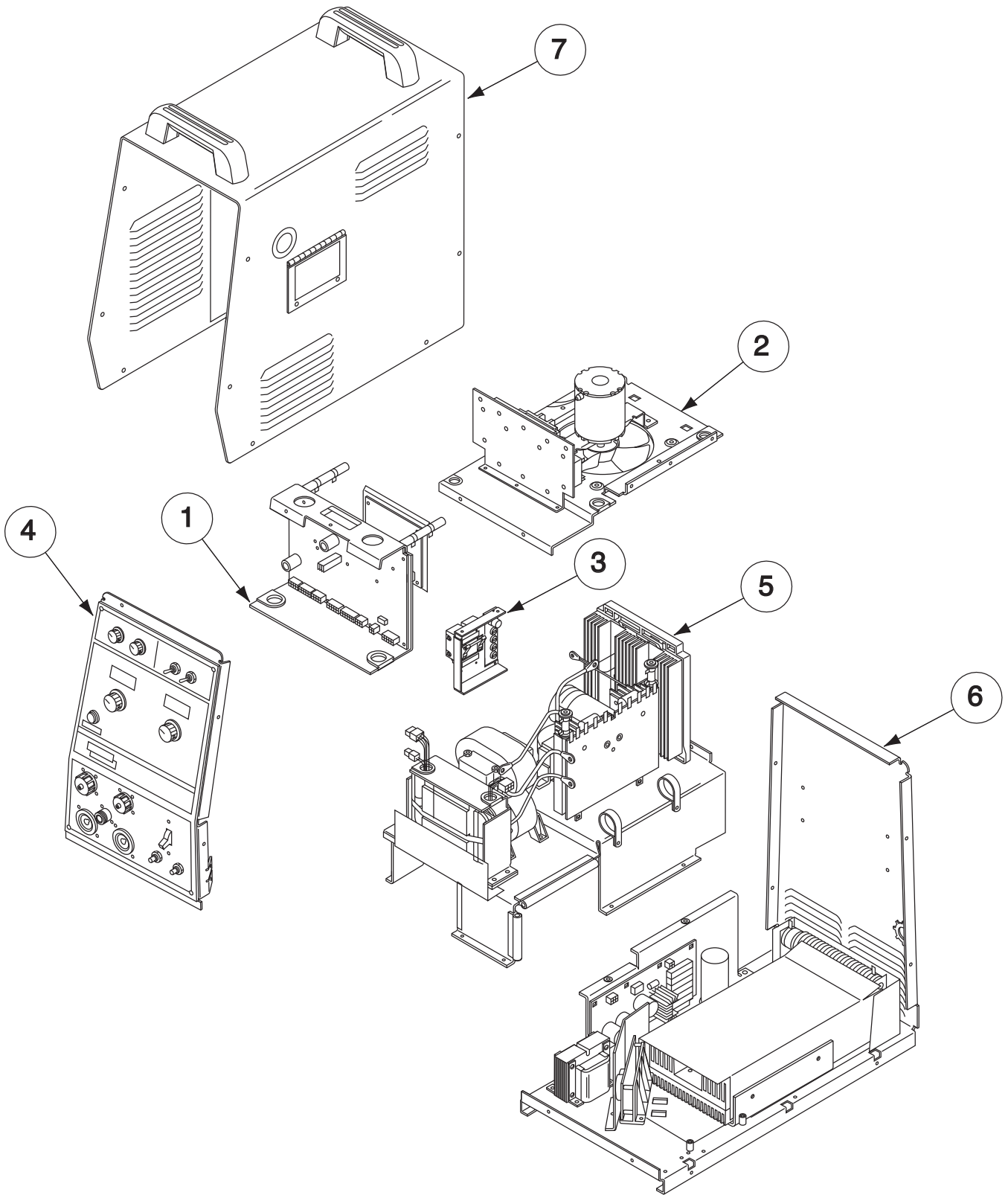
PARTS LIST FOR INVERTEC® STT® II

Index of Sub Assemblies
Illustration of Sub Assemblies
Index of Sub Assemblies
Illustration of Sub Assemblies
Index of Sub Assemblies
Illustration of Sub Assemblies
Index of Sub Assemblies
Illustration of Sub Assemblies

INVERTEC® STT® II



ILLUSTRATION OF SUB-ASSEMBLIES



Index of Sub Assemblies

INVERTEC® STT® II

For Codes: 10381 to 11116

Do Not use this Parts List for a machine if its code number is not listed. Contact the Service Department for any code numbers not listed.

Use the Illustration of Sub-Assemblies page and the table below to determine which sub assembly page and column the desired part is located on for your particular code machine.

Sub Assembly Item No.		1	2	3	4	5	6	7	
SUB ASSEMBLY PAGE NAME	Optional Equipment	Control Box Assembly	Fan Shroud Assembly	Reconnect Panel Assembly	Case Front Assembly	Platform Assembly	Base Assembly	Wraparound Assembly	
PAGE NO.	P-294-B.1	P-294-C	P-294-D	P-294-E	P-294-F	P-294G	P-294-H	P-294-J	
CODE NO.									
10381 (Domestic)		1	1	1	1	1	1	1	
10382 (Int'l)		1	1	1	1	1	1	2	
10383 (European)		1	1	1	1	1	1	2	
11090 (Domestic)		1	1	1	1	1	2	3	
11091 (Int'l)		1	1	1	1	1	2	4	
11092 (European)		1	1	1	1	1	2	4	
11115 (Int'l)		2	1	2	1	2	2	5	
11116 (European)		2	1	2	1	2	2	5	

OPTIONAL EQUIPMENT LISTING

Miscellaneous Options Available for your machine are listed below:

Indicates a change this printing.

DESCRIPTION	PART NUMBER
Twist Mate Cable Plug (1/0-2/0)	Order K852-70
Twist Mate Cable Plug (2/0-3/0)	Order K852-95
STT Proc. Sense Lead Kit 10 Feet	Order K940-10
STT Proc. Sense Lead Kit 25 Feet	Order K940-25
STT Proc. Sense Lead Kit 50 Feet	Order K940-50
Remote Output for Peak and Background Control	Order K942-1



Index of Sub Assemblies

NOTES

INVERTEC® STT® II



Control Box Assembly

Index of Sub Assemblies

Index of Sub Assemblies

Index of Sub Assemblies

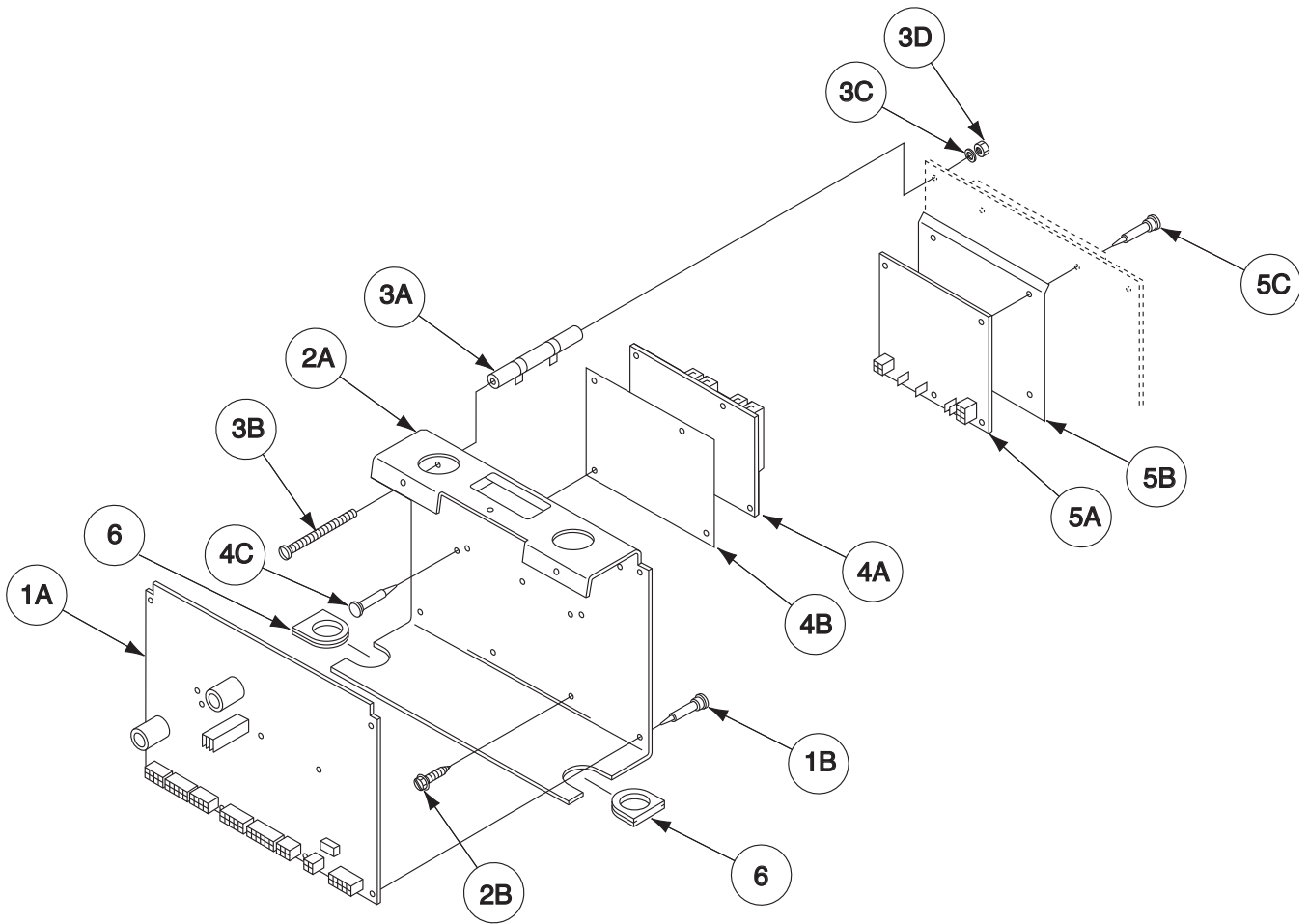
Index of Sub Assemblies

Part Numbers

Part Numbers

Part Numbers

Part Numbers



Indicates a change this printing.

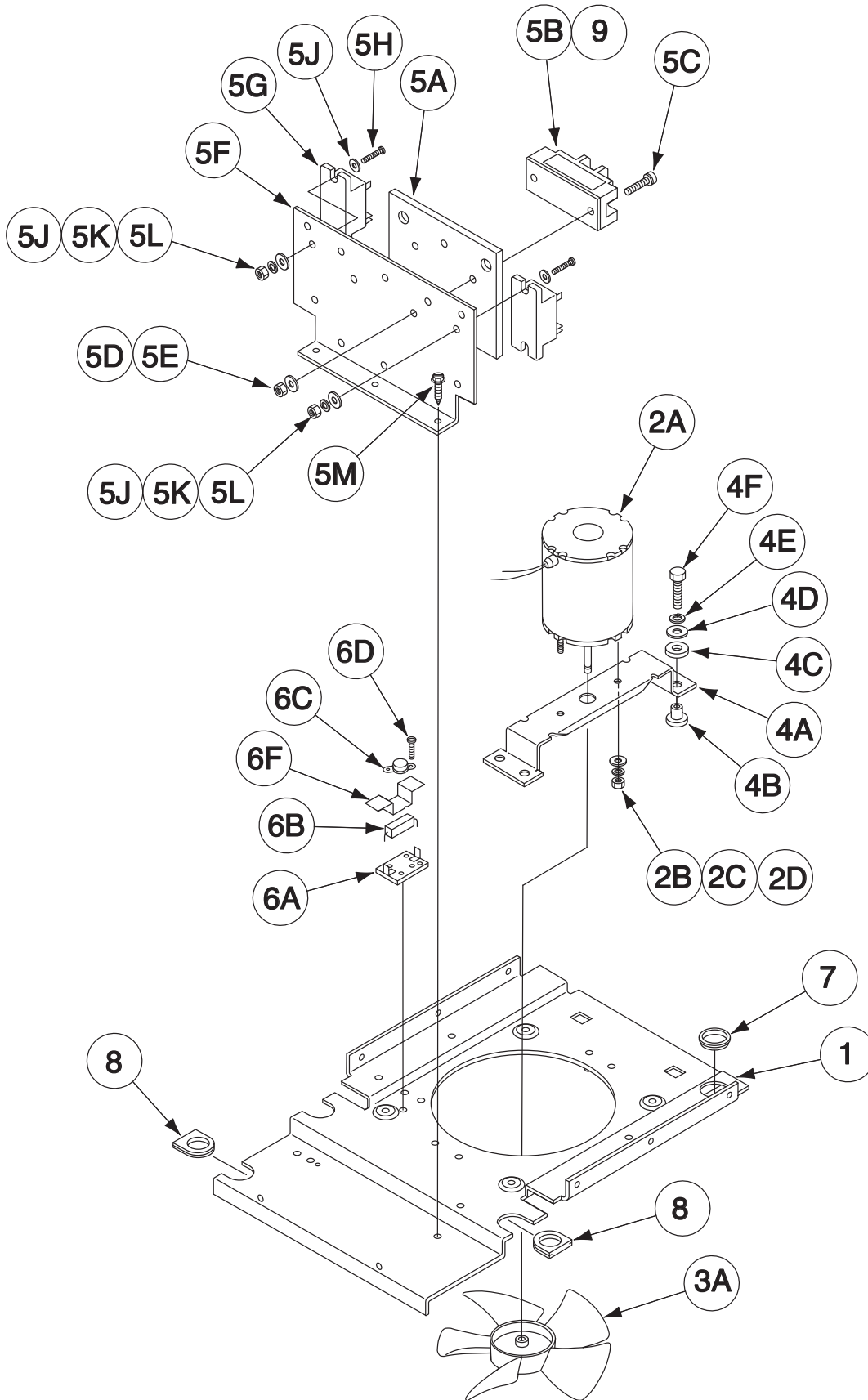
Use only the parts marked "x" in the column under the heading number called for in the model index page.

ITEM	DESCRIPTION	PART NO.	QTY.	1	2	3	4	5	6	7	8	9
1A	Control P.C. Board	G4648-[]	1	•	X							
1A	Control P.C. Board	G2782-[]	1	X	•							
1B	P.C. Board Support	S19300-2	11	X	X							
2A	Control Box	M17562	1	X	X							
2B	Self Tapping Screw	S8025-92	2	X	X							
3A	Resistor (Bleeder)	S10404-108	2	X	X							
3B	#10-24 x 4.50 RHS	CF000239	2	X	X							
3C	Lock Washer	E106A-1	2	X	X							
3D	#10-24 HN	CF000010	2	X	X							
4A	Driver Board	L9134-[]	1	X	X							
4B	Insulation	S20802	1	X	X							
4C	P.C. Board Support	S19300-2	4	X	X							
5A	Protection P.C. Board	L7915-[]	1	X	•							
5A	Protection P.C. Board	L12235-[]	1	•	X							
5B	Insulation	S19031-1	1	X	X							
5C	P.C. Board Support	S19300-2	5	X	X							
6	Grommet	S18543-4	2	X	X							

Note: When ordering new printed circuit boards indicate the dash number [] of the "Old" board that is to be replaced. This will aid Lincoln in supplying the correct and latest board along with any necessary jumpers or adapters. The dash number brackets [] have purposely been left blank so as to eliminate errors, confusion and updates.

Index of Sub Assemblies
 Sub Assembly Illustration
 Index of Sub Assemblies
 Sub Assembly Illustration
 Index of Sub Assemblies
 Sub Assembly Illustration
 Index of Sub Assemblies
 Sub Assembly Illustration

Fan Shroud Assembly



Index of Sub Assemblies
 Part Numbers
 Index of Sub Assemblies
 Part Numbers
 Index of Sub Assemblies
 Part Numbers
 Index of Sub Assemblies
 Part Numbers

Indicates a change this printing.

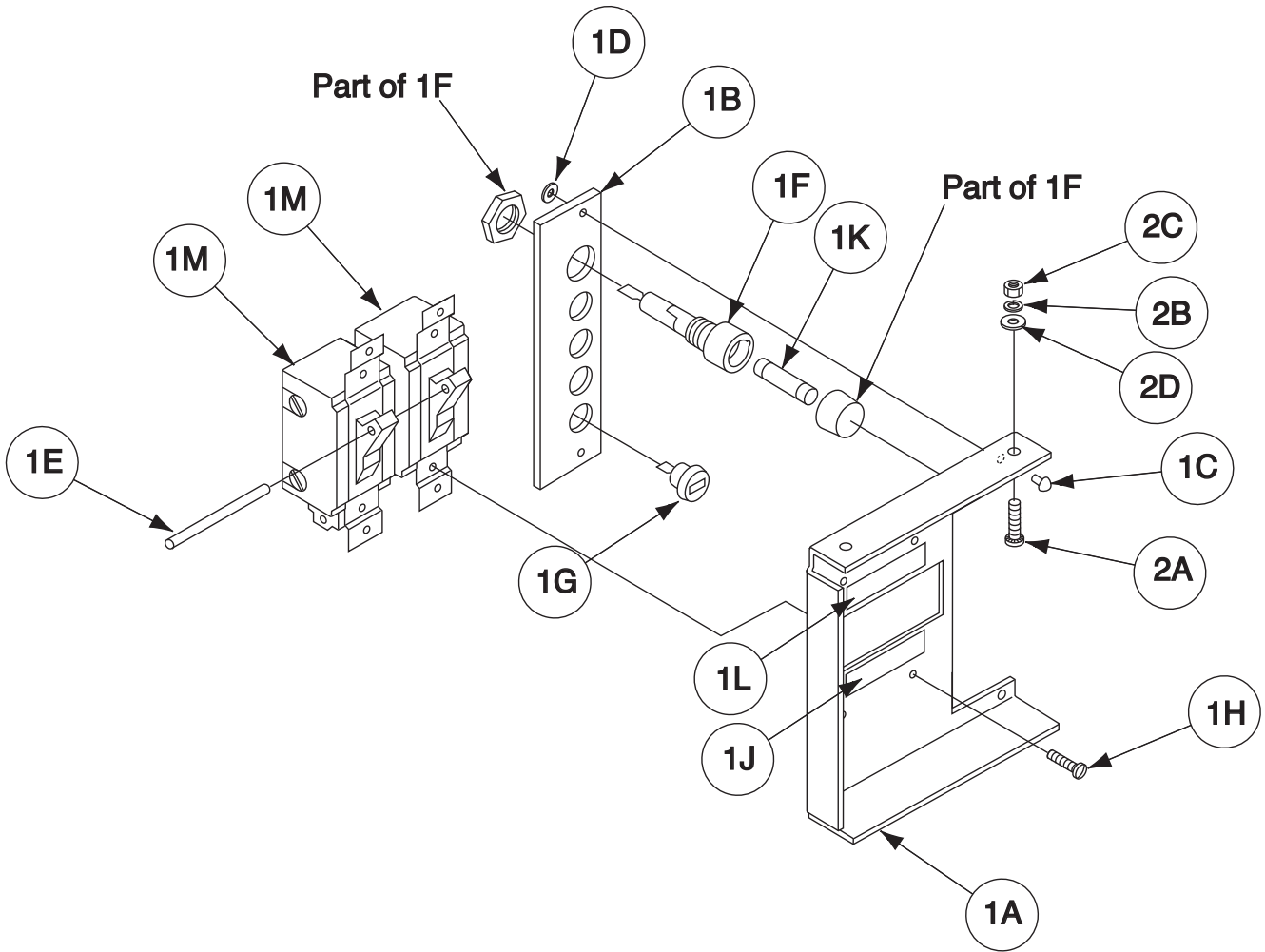
Use only the parts marked "x" in the column under the heading number called for in the model index page.

ITEM	DESCRIPTION	PART NO.	QTY.	1	2	3	4	5	6	7	8	9
1	Fan Shroud Assembly, Includes: Fan Shroud & Rivnut Assembly	M18360 S23018	1 1	X X								
2A	Fan Motor	M17235-2	1	X								
2B	#8-32 HN	CF000042	2	X								
2C	Plain Washer	S9262-3	2	X								
2D	Lock Washer	T4291-A	2	X								
3A	Fan Blade	M15843-2	1	X								
4A	Fan Bracket	M18398	1	X								
4B	Insulator	T11267-A	4	X								
4C	Insulator	T11267-B	4	X								
4D	Plain Washer	S9262-98	4	X								
4E	Lock Washer	E106A-2	4	X								
4F	1/4-20 x 1.25 HHCS	CF000069	4	X								
5	Rectifier Module Asbly, Includes: (Items 5A - 5L)	M18358	1	X								
5A	Heat Sink	M17577	1	X								
5B	Rectifier Module	M15454-6	1	X								
5C	Socket Head Cap Screw	T9447-10	2	X								
5D	Compression Washer	T12735-4	2	X								
5E	1/4-20 HN	CF000017	2	X								
5F	Rectifier Bracket	S23017	1	X								
5G	Relay	S14293-17	2	X								
5H	#6-32 x .500 RHS	CF000004	4	X								
5J	Plain Washer	S9262-3	8	X								
5K	Lock Washer	E106A-13	4	X								
5L	#6-32 HN	CF000005	4	X								
5M	Self Tapping Screw	S8025-92	2	X								
6	Thermostat Assembly, Includes: (Items 6A - 6F)	S23761-1	1	X								
6A	Base Assembly	S18671-1	1	X								
6B	Resistor	T14648-20	1	X								
6C	Thermostat	T13359-15	1	X								
6D	#6-32 x .75 RHS	CF000137	2	X								
6E	#6-32 HN (Not Shown)	CF000005	2	X								
6F	Heat Sink	S23765	1	X								
6G	Standoff (Not Shown)	S19300-2	3	X								
7	Bushing	T12380-4	1	X								
8	Input Cable Grommet	S18543-4	2	X								
9	MOV Assembly, (Units under 575V.)	S18491	1	X								



Index of Sub Assemblies
 Sub Assembly Illustration
 Index of Sub Assemblies
 Sub Assembly Illustration
 Index of Sub Assemblies
 Sub Assembly Illustration
 Index of Sub Assemblies
 Sub Assembly Illustration

Reconnect Panel Assembly



Index of Sub Assemblies

Part Numbers

Index of Sub Assemblies

Part Numbers

Index of Sub Assemblies

Part Numbers

Index of Sub Assemblies

Part Numbers

Indicates a change this printing.

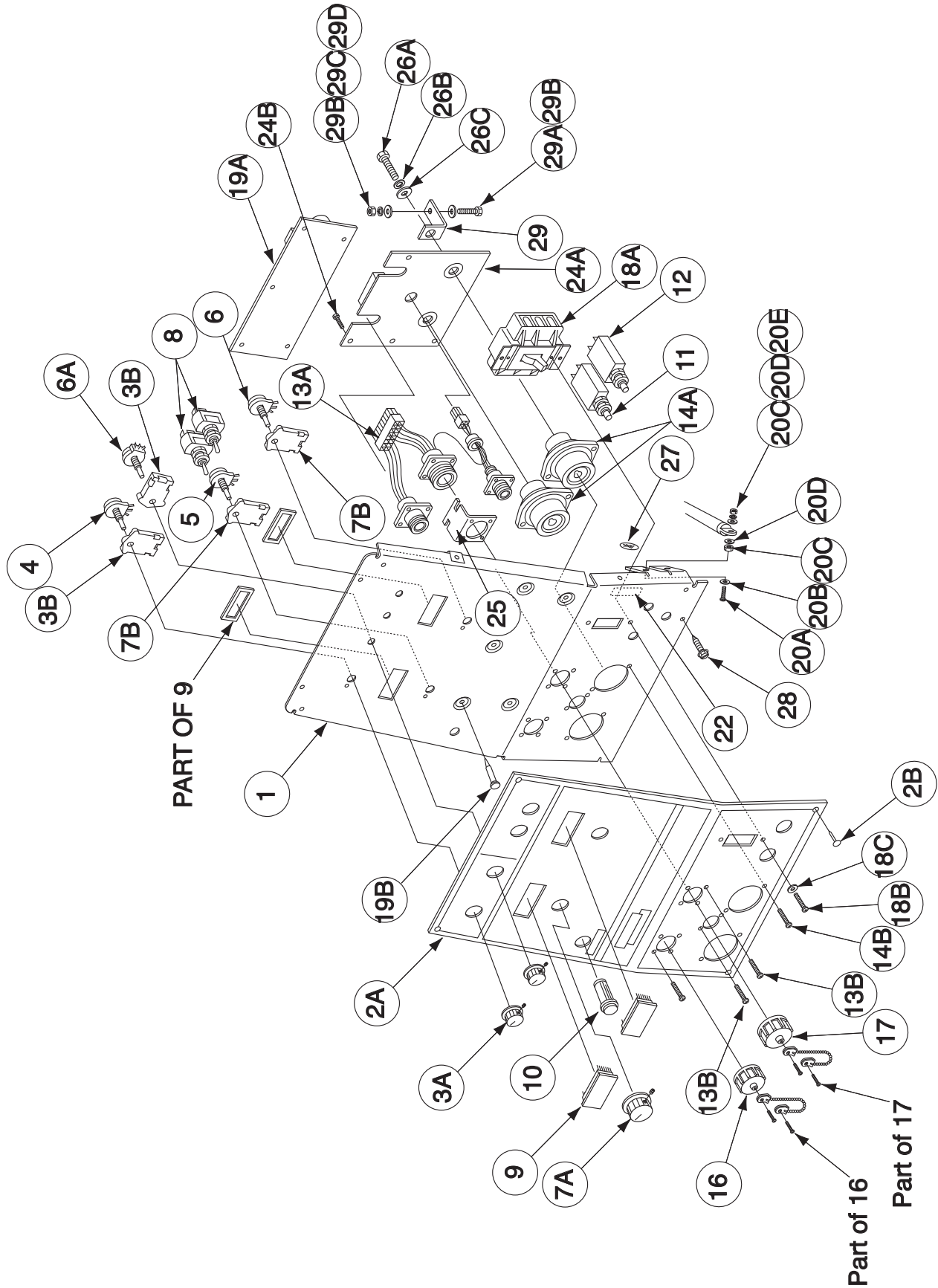
Use only the parts marked "x" in the column under the heading number called for in the model index page.

ITEM	DESCRIPTION	PART NO.	QTY.	1	2	3	4	5	6	7	8	9
1	Reconnect Panel Assembly, Includes: (1A thru 1L)											
1A	Reconnect Box	M16639	1	X	X							
1B	Reconnect Panel	S21490	1	X	•							
1B	Reconnect Panel	S25786	1	•	X							
1C	Rivet	T9701-4	2	X	X							
1D	Plain Washer	S9262-39	2	X	X							
1E	Switch Pin	S20322	1	X	X							
1F	Fuse Holder	S10433-1	1	X	X							
1G	Receptacle	T14530-1	4	X	X							
1H	#6-32 x .375 PPNHS	CF000337	4	X	X							
1J	Decal (200-230V)	T13086-119	1	X	X							
1K	Fuse	T10728-24	2	X	X							
1L	Decal	T13086-118	1	X	X							
1M	Line Switch	S20456	2	X	X							
2A	Sems Screw	T10082-3	2	X	X							
2B	Lock Washer	E106A-1	2	X	X							
2C	#10-24 HN	CF000010	2	X	X							
2D	Plain Washer	S9262-27	2	X	X							



Index of Sub Assemblies
 Sub Assembly Illustration
 Index of Sub Assemblies
 Sub Assembly Illustration
 Index of Sub Assemblies
 Sub Assembly Illustration
 Index of Sub Assemblies
 Sub Assembly Illustration

Case Front Assembly



Indicates a change this printing.

Use only the parts marked "x" in the column under the heading number called for in the model index page.

ITEM	DESCRIPTION	PART NO.	QTY.	1	2	3	4	5	6	7	8	9
1	Case Front Asbly (Domestic & Int'l), Includes: Case Front Asbly, (European), Includes: Case Front	L10511-1	1	X								
		L10511-2	1	X								
		L10299	1	X								
2A	Nameplate (Domestic & Export)	L10279	1	X								
2A	Nameplate (European)	L10510	1	X								
2B	Fastener Button	T14659-1	4	X								
3A	Knob	T13639-3	2	X								
3B	Control Potentiometer Spacer	S18280	2	X								
4	Hot Start Pot. Assembly	S21432	1	X								
5	Peak Current Potentiometer Asbly	S21431	1	X								
6	Background Potentiometer Asbly	S21430	1	X								
6A	Tailout Potentiometer Asbly	S23097	1	X								
7A	Knob	T10491	2	X								
7B	Control Pot Spacer	S18280	2	X								
8	Switch	T10800-38	2	X								
9	Meter	M15480-2	2	X								
10	Light (Thermal)	T13534-8	1	X								
11	Circuit Breaker	T12287-1	1	X								
12	Circuit Breaker (Domestic & Int'l Only)	T12287-1	1	X								
13A	Connector, Plug & Lead Assembly	M18758	1	X								
13B	Self Tapping Screw	S8025-96	10	X								
14A	Output Terminal	M13896-3	2	X								
14B	Thread Forming Screw	S9225-63	4	X								
16	Cap-Cable Connector	S17062-3	1	X								
17	Cap-Cable Connector	S17062-2	1	X								
18A	Line Switch	S20030-1	1	X								
18B	#10-32 x .50 RHS	CF000373	2	X								
18C	Internal Star Washer	T9695-1	2	X								
19A	Power P.C. Board	L8033-[]	1	X								
19B	P.C. Board Standoff	S19300-3	5	X								
20	Ground Screw Assembly, Includes:	S18922	1	X								
20A	Thread Forming Screw	S9225-36	1	X								
20B	Lock Washer	T9695-1	1	X								
20C	#10-24 HN	CF000010	2	X								
20D	Plain Washer	S9262-27	2	X								
20E	Lock Washer	E106A-1	1	X								
21	Control Harness (Not Shown), Includes: Snap on Ferrite Core (Not Shown)	L10509	1	X								
		S25556-1	1	X								
22	Decal	T13086-112	1	X								
24A	Remote Protection P.C. Board	L9657-[]	1	X								
24B	Self Tapping Screw	S8025-91	3	X								
25	P.C. Board Support Bracket	S21456	1	X								
26A	1/2-13 x .75 HHCS	CF000020	2	X								
26B	Lock Washer	E106A-15	2	X								
26C	Plain Washer	S9262-1	2	X								
27	Decal (Ground Connection)	T13260-4	1	X								
28	Self Tapping Screw	S8025-91	4	X								
29	Rectifier Bracket Arm	T11655-7	2	X								
29A	5/16-18 x .75 HHCS	CF000040	2	X								
29B	Plain Washer	S9262-30	2	X								

Index of Sub Assemblies
 Sub Assembly Illustration
 Index of Sub Assemblies
 Sub Assembly Illustration
 Index of Sub Assemblies
 Sub Assembly Illustration
 Index of Sub Assemblies
 Sub Assembly Illustration

Indicates a change this printing.

Use only the parts marked "x" in the column under the heading number called for in the model index page.

ITEM	DESCRIPTION	PART NO.	QTY.	1	2	3	4	5	6	7	8	9
29C	Lock Washer	E106A-14	2	X								
29D	5/16-18 HN	CF000029	1	X								
29E	Plain Washer	S9262-30	2	X								
30	Plug & Lead Assembly (P35) (Not Shown)	S18250-382	1	X								
31	Plug & Lead Assembly (P35) (Not Shown)	S18250-383	1	X								

Note: When ordering new printed circuit boards indicate the dash number [] of the "Old" board that is to be replaced. This will aid Lincoln in supplying the correct and latest board along with any necessary jumpers or adapters. The dash number brackets [] have purposely been left blank so as to eliminate errors, confusion and updates:

Index of Sub Assemblies
 Sub Assembly Illustration
 Index of Sub Assemblies
 Sub Assembly Illustration
 Index of Sub Assemblies
 Sub Assembly Illustration
 Index of Sub Assemblies
 Sub Assembly Illustration

NOTES

Index of Sub Assemblies

Index of Sub Assemblies

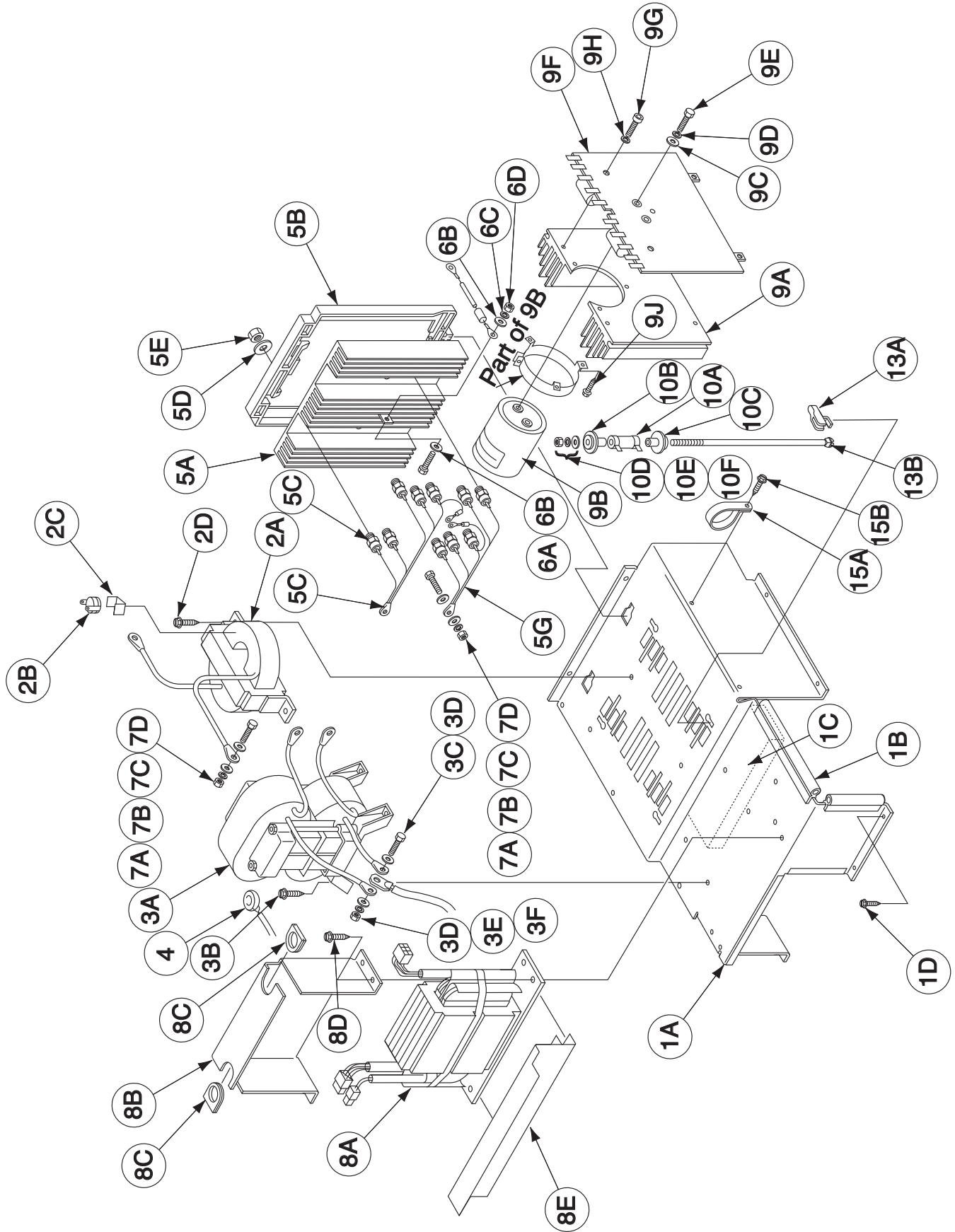
Index of Sub Assemblies

Index of Sub Assemblies

INVERTEC® STT® II



Platform Assembly



INVERTEC® STT® II



07-06-2010

Indicates a change this printing.

Use only the parts marked "x" in the column under the heading number called for in the model index page.

ITEM	DESCRIPTION	PART NO.	QTY.	1	2	3	4	5	6	7	8	9
1	Platform Assembly, Includes:	M18854	1	X	X							
1A	Platform	L10271	1	X	X							
1B	Trim Seal	S22415-5	1	X	X							
1C	Acoustical Foam	M15045-60	1	X	X							
1D	Self Tapping Screw	S8025-92	2	X	X							
1E	Universal Bushing (Not Shown)	T14614-1	2	X	X							
1F	Cable Tie Push Mount (Not Shown)	S19331	1	X	X							
2	Choke & Thermostat Assembly, Includes:	M18754	1	X	X							
2A	Choke Assembly	M17567	1	X	X							
2B	Thermostat	T13359-15	1	X	X							
2C	Insulation	S14499-83	1	X	X							
2D	Thread Forming Screw	S9225-8	2	X	X							
3A	Main Transformer Assembly	G3118	1	X	•							
3A	Main Transformer Assembly	G4555	1	•	X							
3B	Thread Forming Screw	S9225-8	4	X	X							
3C	1/4-20 x .750 HHCS	CF000014	1	X	X							
3D	Plain Washer	S9262-98	2	X	X							
3E	Lock Washer	E106A-2	1	X	X							
3F	1/4-20 HN	CF000017	1	X	X							
4	Toroidal Coil	S18444-4	1	X	X							
5	Output Rectifier Asbly, Includes: (Items 5A thru 5G)	G2356-1	1	X	X							
5A	Heatsink Assembly	M15999	1	X	X							
5B	Mounting Bracket	L8013	1	X	X							
5C*	Output Rectifier Diode	M15482-2	10	X	X							
5D	Spring Washer	T12735-4	10	X	X							
5E	1/4-28 HN	CF000198	10	X	X							
5F	Snubber Assembly (Not Shown)	S19030-3	2	X	X							
5G	Output Rectifier Lead Assembly	S20035-1	2	X	X							
6A	1/4-20 x .75 HHCS	CF000014	1	X	X							
6B	Plain Washer	S9262-98	2	X	X							
6C	Lock Washer	E106A-2	1	X	X							
6D	1/4-20 HN	CF000017	1	X	X							
7A	1/4-20 x .75 HHCS	CF000014	3	X	X							
7B	1/4-20 HN	CF000017	3	X	X							
7C	Lock Washer	E106A-2	3	X	X							
7D	Plain Washer	S9262-98	6	X	X							
8A	Auxiliary Transformer (Domestic & Export)	L9629	1	X	X							
8A	Auxiliary Transformer (European)	L10688	1	X	X							
8B	Transformer Bracket	M17571	1	X	X							
8C	Grommet	S18543-4	2	X	X							
8D	Thread Forming Screw	S9225-8	4	X	X							
8E	Baffle	M18388	1	X	X							
9	F.E.T. Heat Sink Asbly, Includes: (Items 9A thru 9J)	M16635	2	X	X							
9A	FET Heatsink	L8605	1	X	X							
9B	Capacitor Assembly	S19221-1	1	X	X							
9C	Plain Washer	S9262-23	2	X	X							
9D	Lock Washer	E106A-2	2	X	X							
9E	1/4-28 x .625 HHCS	T8833-51	2	X	X							
9F	Switch P.C. Board	L8441-[]	1	X	X							
9G	Socket Head Cap Screw	T9447-28	4	X	X							



Index of Sub Assemblies
 Sub Assembly Illustration
 Index of Sub Assemblies
 Sub Assembly Illustration
 Index of Sub Assemblies
 Sub Assembly Illustration
 Index of Sub Assemblies
 Sub Assembly Illustration

Indicates a change this printing.

Use only the parts marked "x" in the column under the heading number called for in the model index page.

ITEM	DESCRIPTION	PART NO.	QTY.	1	2	3	4	5	6	7	8	9
9H	Lock Washer	E106A-2	4	X	X							
9J	Self Tapping Screw	S8025-76	3	X	X							
10A	Resistor	S10404-114	4	X	X							
10B	Insulator	S20005-2	4	X	X							
10C	Insulator	S20005-1	4	X	X							
10D	#10-24 Hex Nut	CF000010	4	X	X							
10E	Lock Washer	E106A-1	4	X	X							
10F	Plain Washer	S9262-27	4	X	X							
13A	Mounting Spacer	S19207	4	X	X							
13B	Carriage Bolt	T11827-58	4	X	X							
14	Self Tapping Screw	S8025-70	10	X	X							
15A	Lead Clamp	T12563-21	4	X	X							
15B	Self Tapping Screw	S8025-92	4	X	X							

*Orders of more than one diode, all Diodes must have matching number and color dots.

Note: When ordering new printed circuit boards indicate the dash number [] of the "Old" board that is to be replaced. This will aid Lincoln in supplying the correct and latest board along with any necessary jumpers or adapters. The dash number brackets [] have purposely been left blank so as to eliminate errors, confusion and updates.

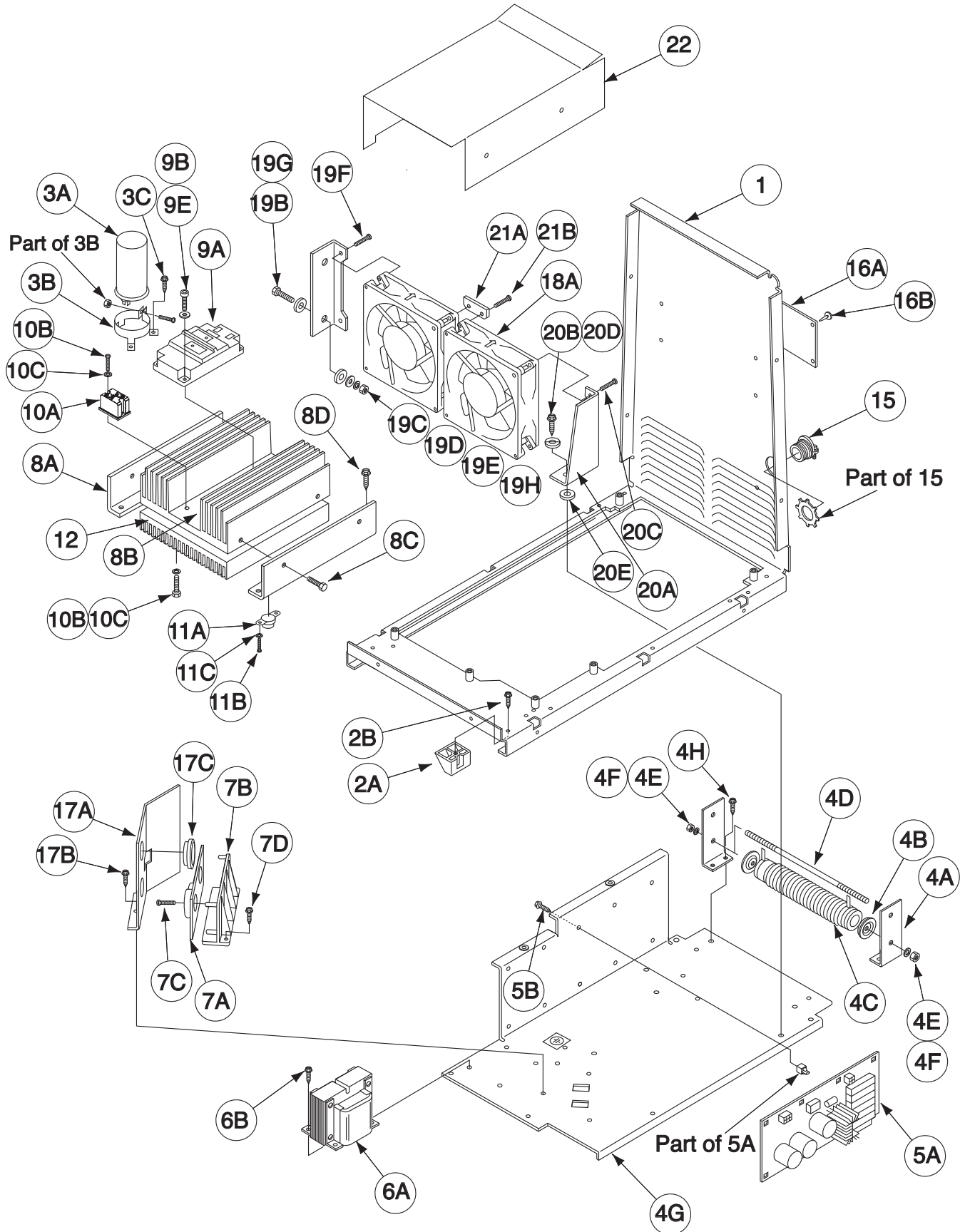
Index of Sub Assemblies
 Sub Assembly Illustration
 Index of Sub Assemblies
 Sub Assembly Illustration
 Index of Sub Assemblies
 Sub Assembly Illustration
 Index of Sub Assemblies
 Sub Assembly Illustration

NOTES

INVERTEC® STT® II



Base Assembly



Index of Sub Assemblies
 Part Numbers
 Index of Sub Assemblies
 Part Numbers
 Index of Sub Assemblies
 Part Numbers
 Index of Sub Assemblies
 Part Numbers

Indicates a change this printing.

Use only the parts marked "x" in the column under the heading number called for in the model index page.

ITEM	DESCRIPTION	PART NO.	QTY.	1	2	3	4	5	6	7	8	9
1	Case & Rivnut Assembly	S23073	1	X	X							
2A	Foot	M15849	4	X	X							
2B	Thread Forming Screw	S9225-8	4	X	X							
	Tray Asbly (Domestic & Export) (Codes 10381 & 10382)	G3125	1	X	•							
	Tray Asbly (Domestic & Export) (Codes 11090, 11091, 11115)	G4499	1	•	X							
	Tray Asbly (European) (Code 10383)	G3125-1	1	X	•							
	Tray Asbly (European) (Codes 11092 & 11116)	G4499-1	1	•	X							
3A	Capacitor (Part of Tray Asbly)	S13490-152	1	X	X							
3B	Capacitor Bracket (Part of Tray Asbly)	S18434-4	1	X	X							
3C	Self Tapping Screw (Part of Tray Asbly)	S8025-76	3	X	X							
4A	Resistor Bracket	S21367	2	X	X							
4B	Centering Washer	S19742	4	X	X							
4C	Resistor	S10404-112	2	X	X							
4E	Lock Washer	E106A-1	4	X	X							
4F	#10-24 HN	CF000010	2	X	X							
4G	Tray	L10280	1	X	X							
4H	Self Tapping Screw	S8025-70	4	X	X							
5A	Darlington Driver Board	G2778-[]	1	X	•							
5A	IGBT Driver Board	L12145-[]	1	•	X							
5B	Self Tapping Screw	S8025-97	8	X	X							
6A	Transformer & Plug Assembly	S21389	1	X	X							
6B	Self Tapping Screw	S8025-92	4	X	X							
7A	Current Sense Board	M17591-[]	1	X	X							
7B	Sensor Board Bracket	M17570	1	X	X							
7C	Self Tapping Screw	S8025-96	4	X	X							
7D	Self Tapping screw	S8025-92	2	X	X							
8A	Mounting Bracket	S23019	2	X	X							
8B	IGBT Heatsink	L10268	1	X	X							
8C	1/4-20 x .50 FHCS	CF000321	4	X	X							
8D	Thread Forming Screw	S9225-8	4	X	X							
9A	Transistor Module (Codes 10381, 10382 & 10383)	M15720-1	1	X	•							
9A	IGBT Module (Codes 11090, 11091, 11115 & 11116)	M20285	1	•	X							
9B	M6 x 20 Socket Head Cap Screw	T14731-17	4	X	X							
9C	M6 x 15 HHCS (Not Shown)	T14731-38	2	X	•							
9C	M8 x 16 HHCS (Not Shown)	NSS	1	•	X							
9D	Plain Washer (Not Shown)	S9262-98	2	X	•							
9D	Plain Washer (Not Shown)	S9262-150	4	•	X							
9E	Lock Washer	E106A-2	6	X	•							
9E	Lock Washer	E106A-2	4	•	X							
10A	Rectifier Module	M15482-1	1	X	X							
10B	#6-32 x .50 RHS	CF000004	2	X	X							
10C	Lock Washer	E106A-13	2	X	X							
11A	Thermostat	T13359-15	1	X	X							
11B	Socket Head Cap Screw	T9447-61	2	X	X							
11C	Lock Washer (Not Shown)	E106A-13	2	X	X							
12	Heat Sink	M18372	1	X	X							
13	Plug & Lead Asbly (P12) (Not Shown)	S18250-488	1	X	X							
14	Plug & Lead Asbly (P1, P18) (Not Shown)	S18250-487	1	X	X							
15	Box Connector (Codes 10381 & 10382)	T9639-3	1	X	•							
15	Connector (Code 10383)	S19999	1	•	X							

Index of Sub Assemblies
 Sub Assembly Illustration
 Index of Sub Assemblies
 Sub Assembly Illustration
 Index of Sub Assemblies
 Sub Assembly Illustration
 Index of Sub Assemblies
 Sub Assembly Illustration

Indicates a change this printing.

Use only the parts marked "x" in the column under the heading number called for in the model index page.

ITEM	DESCRIPTION	PART NO.	QTY.	1	2	3	4	5	6	7	8	9
16A	Rear Nameplate (Domestic) (Codes 10381, 11090)	S21372	1	X	X							
16A	Rear Nameplate (Export) (Codes 10382, 11091)	S21371	1	X	X							
16A	Rear Nameplate (European) (Codes 10383, 11092)	S21370	1	X	X							
16A	Rear Nameplate (Export) (Code 11115)	S25788	1	•	X							
16A	Rear Nameplate (European) (Code 11116)	S25787	1	•	X							
16B	Fastener Button	T14659	6	X	X							
17A	Elbow	M18380	1	X	X							
17B	Self Tapping Screw	S8025-92	2	X	X							
17C	Universal Bushing	T14614-1	2	X	X							
18A	Tubaxial Fan	S18977-3	2	X	X							
18B	Dust Cover (Not Shown)	S21320	2	X	X							
19A	Fan Bracket	M18384	1	X	X							
19B	1/4-20 x 1.00 HHCS	CF000015	2	X	X							
19C	Plain Washer	S9262-98	2	X	X							
19D	Lock Washer	E106A-2	2	X	X							
19E	1/4-20 HN	CF000017	2	X	X							
19F	Thread Forming Screw	S9225-51	2	X	X							
19G	Insulator	T11267-A	2	X	X							
19H	Insulator	T11267-B	2	X	X							
20A	Fan Angle Bracket	M18383	1	X	X							
20B	Thread Forming Screw	S9225-45	1	X	X							
20C	Thread Forming Screw	S9225-51	2	X	X							
20D	Insulator	T11267-A	1	X	X							
20E	Insulator	T11267-B	1	X	X							
21A	Fan Mounting Plate	S23068	4	X	X							
21B	Thread Forming Screw	S9225-51	8	X	X							
22	Duct	M18387	1	X	X							
23	Country of Origin Decal (Not Shown) (Code 11091)	S24727-1	1	•	X							
23	Country of Origin Decal (Not Shown) (Code 11116)	T13086-130	1	•	X							
24	CCC Decal (Not Shown) (Code 11091)	T13086-191	1	•	X							

Note: When ordering new printed circuit boards indicate the dash number [] of the "Old" board that is to be replaced. This will aid Lincoln in supplying the correct and latest board along with any necessary jumpers or adapters. The dash number brackets [] have purposely been left blank so as to eliminate errors, confusion and updates.

Index of Sub Assemblies
 Sub Assembly Illustration
 Index of Sub Assemblies
 Sub Assembly Illustration
 Index of Sub Assemblies
 Sub Assembly Illustration
 Index of Sub Assemblies
 Sub Assembly Illustration

NOTES

Index of Sub Assemblies

Index of Sub Assemblies

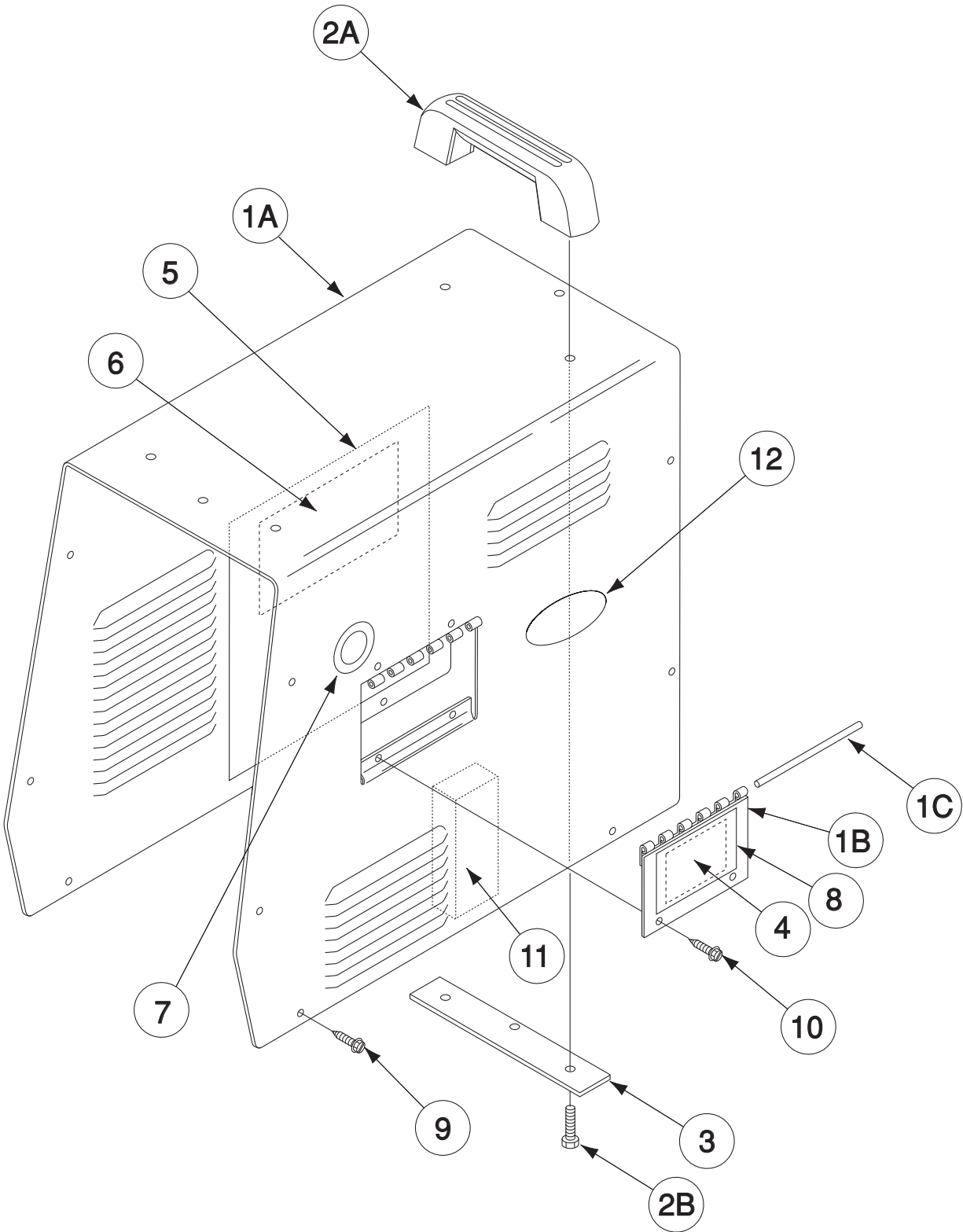
Index of Sub Assemblies

Index of Sub Assemblies

INVERTEC® STT® II



Wraparound Assembly



Indicates a change this printing.

Use only the parts marked "x" in the column under the heading number called for in the model index page.

ITEM	DESCRIPTION	PART NO.	QTY.	1	2	3	4	5	6	7	8	9
	Wraparound Asbly, Includes: (Domestic)	L10559-1	1	X	•	•	•	•				
	Wraparound Asbly, Includes: (Europe & Int'l)	L10559-2	1	•	X	•	•	•				
	Wraparound Asbly, Includes: (Domestic)	L10559-3	1	•	•	X	•	•				
	Wraparound Asbly, Includes: (Europe & Int'l)	L10559-4	1	•	•	•	X	•				
	Wraparound Asbly, Includes: (Europe & Int'l)	L10559-5	1	•	•	•	•	X				
	Wraparound, Door & Hinge Assembly, Includes:	M18703	1	X	X	X	X	X				
1A	Wraparound	G3119	1	X	X	X	X	X				
1B	Access Door	S20991	1	X	X	X	X	X				
1C	Hinge	S21250-6	4	X	X	X	X	X				
1D	Rivet (Not Shown)	T9701-3	4	X	X	X	X	X				
2A	Handle	M15446	2	X	X	X	X	X				
2B	Thread Forming Screw	S9225-53	4	X	X	X	X	X				
3	Backing Strip	S21411	2	X	X	X	X	X				
4	Reconnect Instructions	S21230	1	X	X	X	X	X				
5	Wiring Diagram	G3136	1	X	X	•	•	•				
5	Wiring Diagram	G4500	1	•	•	X	X	•				
5	Wiring Diagram	G4557	1	•	•	•	•	X				
6	Warning Decal (Domestic)	M16196	1	X	•	X	•	•				
6	Warning Decal (European & International)	L8064-1	1	•	X	•	X	X				
7	Warranty Decal	S22127-1	1	X	X	X	X	X				
8	Warning Decal	S20900	1	X	X	X	X	X				
9	Self Tapping Screw	S8025-91	16	X	X	X	X	X				
10	Self Tapping Screw	S8025-91	2	X	X	X	X	X				
11	Acoustical Foam	M15045-61	1	X	X	X	X	X				
12	STT® Decal	S25493	2	X	X	X	X	X				



Index of Sub Assemblies
 Sub Assembly Illustration
 Index of Sub Assemblies
 Sub Assembly Illustration
 Index of Sub Assemblies
 Sub Assembly Illustration
 Index of Sub Assemblies
 Sub Assembly Illustration

NOTES

INVERTEC® STT® II

